



Marketing Activity

Alei Merrill

2308 Ram, Eagle



<u>DATE</u>	<u>DESCRIPTION</u>	<u>RESULTS</u>
12-01	Target Facebook	CA- 2746
12-02	Target Facebook	CA-2245
12-03	Leverage Global	Distribution
12-07	ListHub	Complete
12-09	Proxio	Complete
12-09	3-D Syndication	Added- All
12-09	Branded 3-D	Site Plan - MLS
12-10	Vimeo Tour	Added- All
12-19	Updated Photos	Added-All
12-19	Target Facebook	US- 1875
12-21	Target PPC	Added- All
12-29	Ongoing Facebook	Continued

<u>DATE</u>	<u>DESCRIPTION</u>	<u>RESULTS</u>
1-01	Target Instagram	
1-01	Target Facebook	
1-05	Luxury.com	
1-07	ListHub & Proxio	
1-08	DuPont Elite	
1-09	Aerial 3-D	
1-09	Tour Factory Push	
1-12	YouTube boost Tour	
1-18	Updated Photos	
1-19	Target PPC	
1-23	Target Social Media	
1-30	Ongoing Facebook	

ONLINE SYNDICATION

Your listing is syndicated to the following websites from the MLS, Tour Factory, and Accel Realty Partners Paid:

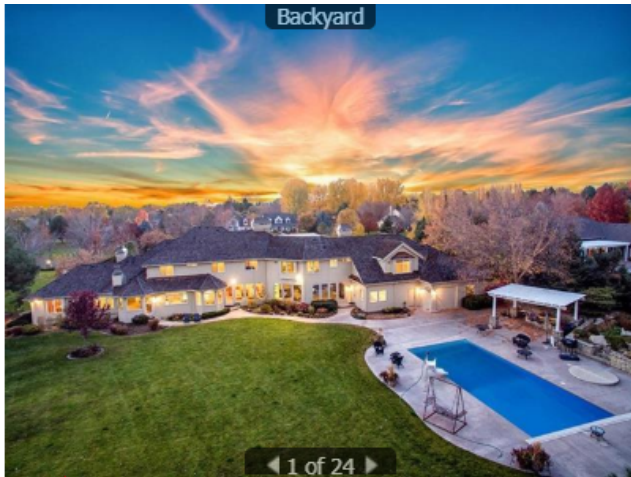
*Leverage Global Partners *Proxio network *Listhub network *AOL Real Estate *Blinkx Video Network *BuyerHomeSite.com *Chase My New Home *CLRSearchcom *dwell *DuPont REGISTRY (\$500k+ homes) *eLookyLoo *Financial Times *Forclosure.com *FreedomSoft *FrontDoor *Google (submitted but no guaranteed)*GovListed.com *Guidance Realty *Home .me *Homeadverts *HomeDebut.com *HomeFinder.com *Homes.com *Homes By Lender*Homes&Land *Homes.com *HomeTourConnect *HomeWinks *HotPads *House 4 *HouseHunt.com *HouseLocator *HUD Seeker*ImagesWork by CirclePix *International New York Times *JamesEdition *Juwai *LakeHomesUSA *LandAndFarm *LandWatch*LeadingRE.com *LiquidusMedia *LuxuryEstate.com *Mansion Global *Monmouth MLS *New Home Source *New York Times *OLX.com*Oodle.com *OpenHousesAmerica.com *PropGoLuxury.com *Property Pursuit *Property Shark *Real-Buzz *RealEstateCentral*RealtyStore *RealtyTrac *RentSocial *Revestor *Sarges List *Showing Suite *Smarter Agent *SothebysRealty.com *StreetEasy *The Real Estate Book *Trulia.com *USALifestyleRealEstate *USHUD.com *Vast *VisualShows *Wall Street Journal *XiLi Mobile *Yahoo*YouTube.com *Zillow Network, Listings subject to minimum qualifications for dwell, JamesEdition, and Mansion Global), AdWerx * Back At You Media * BDRMS * Close Homes * DigiPropz *DODHousing Network * DreamHomeList * eLookyLoo *FindAPlace4Me by VisualTour * FindTheBest Homes * FixFlip * Foreclosure.com * FreedomSoft * GCHomeSearch * Guyigu * Harmon Homes * Home .me by TourFactory * HomeBidz * HomeFacts * HomeFinder.com * HomePriceTrends * Homes.com * HomeSpotter * HomeStarSearch * HomeWinks * HouseHunt.com * Houses.net * HouseValueStore * ImagesWork by CirclePix * Investability * Joyful Home * Juwai * Kahping * KeyBoom * LandAndFarm * Lands of America * LearnMoreNow.com/FindHomes * Lifestyled Listings * ListReports * LuxuryRealEstate.com * MyRentToOwn.com * Nestigator * Open Real Estate Community * Point Homes * Property Shark * Rate My Agent * RealQuest Express * RealSavvy * RealtyStore * Relola * Revestor * SearchALLProperties by L L * Showing Suite * The Real Estate Book * TotalExpert * Trulia* USHUD.com * Vast * Vscreen * WikiRealty * Ylopo * Zumper



Marketing Activity

2308 Ram, Eagle

MLS



MLS # [98712506](#) Price **\$1,450,000**
 Class **Residential** Status **Active**
 Type **Single Family w/ Acreage** # Beds **7**
 Area **Eagle - 0900** # Baths **6.0**
 Address **2308 N Ram Ave** Level **2 Sty w/BG**
 Unit # Eagle, ID 83616 Apx SqFt **9348** Garage/Carport **8 /**

REMARKS
 Secluded Eagle Estate hidden on a two acre lot just north of downtown. Custom built with grand entrance, formal dining, library and media room with floor to ceiling windows and intricate wood details. Open kitchen with Blue Star gas range, Sub zero fridge and double ovens. Private main level master suite with fireplace, patio access, soaker tub and oversized closet with excessive his and hers storage. Separate living area with laundry room and garage access. Heated in ground pool, spa and outdoor kitchen.

AGENT REMARKS
 Big Horn Subdivision minutes from downtown Eagle. Home could be used for two separate living areas. Dedicated media room, exercise room, office, 2 laundry rooms and bonus play room. Large basement storage room off garage. Underground generator and massive storage room. Easy to show. Call John Johnson for appointment 208-921- 1690. Thank you.

Agent Count: **509** Open House: [<Click To See Open House](#)
 Client Count: **92**

[Schedule a Showing](#)

GENERAL		Confidential: This view may only be distributed to IMLS members. Any violation subject up to a \$500 fine.	
Listing Date	11/14/2018	List Agent - Phn	Alej M Gothberg - Voice: 208-573-1619
Expiration Date	11/30/2019	List Office - Phn	Accel Realty Partners - Main: 208-450-3000
DOM / CDOM	98 / 98	Owner/Main/Alt.	Of Record
Year Built	1995	Co-List Agent	John Johnson - Main: 208-921-1690
Age	21 - 30 Years	Team:	Living Main 18x14
Lot Size	320 X 276	Tenants Name	Dining Main 18x15
# Acres	2.020	Agent Email	Family Main 18x18

MLS since 11-14 - 531
 Count - 93



Marketing Activity

2308 Ram, Eagle



SYNDICATION

[Send or Schedule a Seller Report](#)



Online Marketing Summary

Alei Gothberg
410 E. State Street
Suite 100
Eagle, ID 83616, US
208-573-1619
alei@aleimerrill.com



2308 N Ram Ave
Eagle, ID 83616, US
MLS # 98712506
\$1,450,000

November 14, 2018 - February 17, 2019

Your property has received a total of

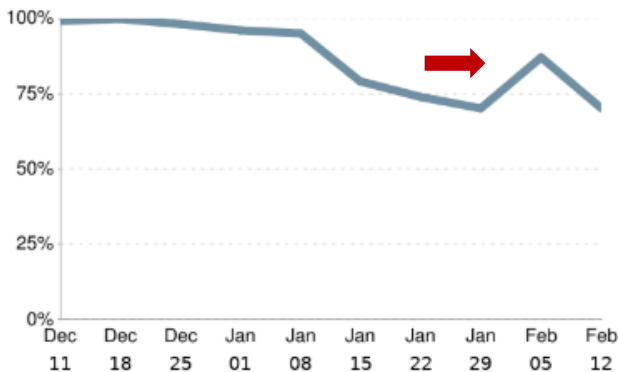
13,562
Detail Views

1
Leads

How is your property performing?

13 Week Average: Your property has performed as well or better than 89% of the market.

Market Comparison



Your Property Detail Views

Real Estate Industry Websites	3,088
realtor.com (3,070) 🏠 Intermountain MLS (18)	
Additional Websites	10,474
Zillow (10,363) 🏠 LuxuryRealEstate.com (96) Homes.com (11)	
Total	13,562

Your Listing Was Sent To These Additional Websites*

[AdWerx](#) • [AgentDesks](#) • [Back At You Media](#) • [DigiPropz](#) • [DreamHomeList](#) • [Equator](#) • [FindAPlace4Me by VisualTour](#) • [Flipcomp](#) • [Foreclosure.com](#) • [Harmon Homes](#) • [Home2.me by TourFactory](#) • [HomeBidz](#) • [HomePriceTrends](#) • [Homes&Land](#) • [HomeSpotter](#) • [HomeSteps](#) • [HomeWinks](#) • [HouseHunt.com](#) • [Houses.net](#) • [HousesForSale](#) • [HouseValueStore](#) • [IdealEstate](#) • [Juwai](#) • [Kahping](#) • [LearnMoreNow.com/FindHomes](#) • [ListReports](#) • [MyRentToOwn.com](#) • [Nestigator](#) • [NestReady](#) • [Nobbas](#) • [ParkBench](#) • [PNC](#) • [Point2 Homes](#) • [Properties Online](#) • [Property Shark](#) • [PropStream by Equimine](#) • [REA Group](#) •

Count – 13,613



Marketing Activity

ACCEL REALTY PARTNERS
A Boise Tradition

2308 Ram, Eagle

Zillow Corp

Zillow Buy | **CONTACT AGENT** | SAVE | SHARE | MORE | EXPAND | CLOSE

2308 Ram eagle

Don't miss out!
New homes are getting added

2308 N Ram Ave
Eagle, ID 83616

FOR SALE
\$1,450,000
Zestimate: \$1,438,768

7 beds · 6 baths · 9,348 sqft

EST. MORTGAGE
\$5,598/mo

[Get pre-qualified](#)

Listed by:

CONTACT AGENT
Steven Caporale
Phone
stevenc@accelrealtypartners.com

I am interested in 2308 N Ram Ave, Eagle, ID 83616.

[Contact Agent](#)

I want financing information

**Zillow.com since 11-14 - 29,464
Saves - 438**



Marketing Activity

ACCEL REALTY PARTNERS
A Boise Tradition

2308 Ram, Eagle

New Corp

< **realtor.com**

N Ram Ave, Eagle, ID × 🔍

Log In Sign Up



Presented by:
Alei Merrill Gothberg (855) 744-8291

Brokered by:
Accel Realty Partners

"The difference is in the details"



For Sale - Active 🏠 VR Tour 📷 1 / 24

More about this property

I'm interested in 2308 N Ram Ave.

Get pre-approved by a lender.

Contact Agent

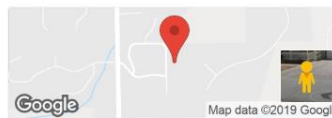
By clicking "Contact Agent", you consent to receive texts and calls (including by automated means and prerecorded/artificial voices) from realtor.com and real estate professionals about your request. Your consent is not required as a condition to buy. [More](#)

\$1,450,000

📅 Est. Payment **\$5,829/mo**

2308 N Ram Ave, Eagle, ID 83616

7 beds 6 baths 9,348 sq ft 2.02 acres lot



Commute Time

Realtor.com 18,716



Marketing Activity

2308 Ram, Eagle

LGP

ACCEL REALTY PARTNERS FEATURED PROPERTIES



MODERN MOUNTAIN ACREAGE

5685 Highway 8
Deary, Idaho 83823

Welcome to a modern luxury ranch on massive acreage. This architecturally-dynamic home was designed to impress and captivate. Situated on a private estate of 174 acres in the beautiful Palouse region of Idaho. (Near Moscow, Idaho and Pullman, Washington.) This stunning homestead is situated adjacent to public acreage making it one of the most unique in the...

\$1,900,000
3 BEDS
3 BATHS
5,882 SQ. FT.
174.00 ACRES
VIEWS
PRIVATE
COMMUNITY
AMENITIES
BALCONY /
TERRACE



FLAWLESS EAGLE CLASSIC

2308 N Ram Ave
EAGLE, ID 83616

Exquisite and sophisticated define this custom home capturing traditional architecture. Offering big views and a private location, the home is rich in color, personality, and texture. This estate-size lot is a spacious and secluded retreat only a few minutes from downtown Eagle, Idaho. Featuring a circular driveway, grand entrance, formal dining, library...

\$1,450,000
7 BEDS
6 BATHS
9,348 SQ. FT.
2.00 ACRES
VIEWS
SWIMMING POOL
LIBRARY
GYM



TRADITIONAL & SOPHISTICATED

3100 N. Glen Stuart Lane
Eagle, Idaho 83616

Stunning resort-inspired, private-gated estate home with panoramic views of the Eagle/Boise foothills on 7-treelined acres of pristine grounds. Mature landscaping and unique water features charm the senses. This home is spacious and elegant, with a large upstairs recreation room, private movie theater, and custom wine cellar. Described as the "perfect..."

\$2,185,000
5 BEDS
10 BATHS
9,046 SQ. FT.
7.00 ACRES
TENNIS COURT
SWIMMING POOL
MEDIA ROOM
BALCONY /
TERRACE



PRESTIGIOUS ESTATE HOME

5006 Half Moon Lane
Eagle, Idaho 83616

This elegant 6-Bedroom-Suite Home has 5 Acres of custom landscaping featuring private stocked pond, impressive water features, and direct access to the Boise River. Surrounded by private serenity and abundant conservation space. Come home to no neighbors visible from almost anywhere on the property. Drive down the 1600-foot gated, private lane. The...

\$2,295,000
6 BEDS
5 BATHS
1 HALF BA
8,130 SQ. FT.
5.00 ACRES
GUEST HOUSE
EXTRA KITCHEN
SWIMMING POOL
WATERFRONT

SEE MORE RESULTS

Showcase Property—1973



Marketing Activity

2308 Ram, Eagle

Global Partners

Home **Properties** Lifestyle Locations Explore

THE NETWORK Empowering Your Next Bold Move

Properties / Flawless Eagle Classic

FEATURED LOCATION

BOISE, ID, USA
Welcome to the Treasure Valley and Boise, Idaho

REPRESENTED BY

AGENT CONTACTS
Alej Merrill Gothberg
208-573-1619 | Email

RELATED PROPERTY LISTINGS

- MODERN MOUNTAIN ACREAGE**
5685 Highway 8
Drury, Idaho 83823
\$1,000,000
- FLAWLESS EAGLE CLASSIC**
2308 N Ram Ave
EAGLE, ID 83616
\$1,450,000
- TRADITIONAL & SOPHISTICATED**
3100 N. Glen Stuart Lane
Eagle, Idaho 83616
\$2,385,000
- PRESTIGIOUS ESTATE HOME**
5906 Hill Moon Lane
Eagle, Idaho 83616
\$2,295,000

CONTACT AGENT

FLAWLESS EAGLE CLASSIC

2308 N Ram Ave | EAGLE, ID 83616 | \$1,450,000

SHARE
VIEW ON MAP
PROPERTY WEBSITE
VIRTUAL TOUR

7 BEDS | 6 BATHS | 9,348 SQ. FT. | 2.00 ACRES | VIEWS | SWIMMING POOL | LIBRARY | GYM

Exquisite and sophisticated define this custom home capturing traditional architecture. Offering big views and a private location, the home is rich in color, personality, and texture. This estate-size lot is a spacious and secluded retreat only a few minutes from downtown Eagle, Idaho. Featuring a circular driveway, grand entrance, formal dining, library, exercise loft, and media room. Intricate wood details add to the warmth and charm. A tucked away main-level master suite has fireplace, pool access, and custom designed walk in closet.

Contact Alej Merrill Gothberg | 208-573-1619

Represented by:
Accel Realty Partners

CONTACT AGENT

PROPERTY SEARCH

enter address, city or zip

BEDROOMS: Any | BATHS: Any

MINIMUM PRICE: Any | MAXIMUM PRICE: Any

SEARCH

Showcase Property—1973



Marketing Activity

2308 Ram, Eagle

 ACCEL REALTY PARTNERS
A Boise Tradition

Tour Factory Premium



Showcase Property—16,541



Marketing Activity


 ACCEL REALTY PARTNERS
A Boise Tradition

2308 Ram, Eagle

Luxury Collection

2308 N. RAM AVE
offered at \$1,450,000

[OVERVIEW](#) [AGENT](#) [FEATURES](#) [GALLERY](#) [MAP](#)



7 Beds · 6 Baths · 9,348 sqft

Exquisite and sophisticated define this custom home capturing traditional architecture. Offering big views and a private location, the home is rich in color, personality, and texture. This estate-size lot is a spacious and secluded retreat only a few minutes from downtown Eagle, Idaho. Featuring a circular driveway, grand entrance, formal dining, library, exercise loft, and media room. Intricate wood details add to the warmth and charm. A tucked away main-level master suite has fireplace, pool access, and custom designed walk in closet.

Detailed Views—387



Marketing Activity

ACCEL REALTY PARTNERS
A Boise Tradition

2308 Ram, Eagle

Luxury.com



Request Information



<http://luxre.com/r/Cu4x>

Price

\$1,450,000 USD

United States Dollar

Listing Status Active

Bedrooms 7

Full Baths 6

2308 N RAM AVE
EAGLE, IDAHO, UNITED STATES

Amenities

Pool, Vacuum System.

Appliances

Central Air Conditioning, Dishwasher, Disposal, Microwave Oven, Oven, Refrigerator, Washer & Dryer.

Interior features

Hot Tub/Jacuzzi/Spa, Trash Compactor.

Exterior finish

Stone, Stucco.

Roofing

Wood Shingle.

Presented by



Alei Merrill Gothberg

Boise Idaho Luxury Real Estate
Alei Merrill Gothberg of Accel Realty
Partners

[Click To Show Phone](#)

Unique Views - 714



Marketing Activity

2308 Ram, Eagle

 ACCEL REALTY PARTNERS
A Boise Tradition

Social Media

ENCHANTING ESTATES



Exquisite and Sophisticated Eagle Classic

2308 N Ram Ave., Eagle, ID 83616

\$1,450,000 | 7 BD | 6 BA | 9,348 S.F. | 2 Acres

Facebook—24,828



Marketing Activity

2308 Ram, Eagle

Social Media

Accel Luxury Collection by Accel Realty Partners
Published by Steven Caporale [?] · December 19, 2018 ·

Exquisite and sophisticated define this custom home capturing traditional architecture. Offering big views and a private location, the home is rich in color, personality, and texture.

Contact Alei Merrill Gothberg at 208-573-1619

ACCELCOLLECTION.COM
2308 N. Ram Ave - Accel Luxury Collection
Accel Luxury Collection features 2308 N. Ram Ave in Ea...

Learn More

1,887 People Reached 147 Engagements [Boost Again](#)

Accel Luxury Collection by Accel Realty Partners
Published by Angela DeRisio [?] · November 30, 2018 ·

This secluded Eagle estate is a dream!
7BED | 6BATH | 9,348SqFt | 2+acres
Heated in ground pool, spa and outdoor kitchen!

HOMESEARCHBOISE.COM
2308 N Ram Ave, Eagle, 83616
Property 2308 N Ram Ave, Eagle, 83616 has 7 bedroom...

Learn More

1,133 People Reached 92 Engagements [Boost Again](#)

Delivery	Reach	Impressions	Frequency	Results	Cost per Result
ing	2,137	2,413	1.13	305 Link Clicks	\$0.07 Link Click
ing	2,418	2,805	1.16	203 Link Clicks	\$0.10 Link Click
ing	2,065	2,204	1.07	191 Link Clicks	\$0.10 Link Click
ing	1,516	1,825	1.20	101 Link Clicks	\$0.15 Link Click
ing	1,706	2,043	1.20	160 Link Clicks	\$0.09 Link Click
ing	1,126	1,339	1.19	142 Link Clicks	\$0.07 Link Click
ing	974	985	1.01	87 Link Clicks	\$0.11 Link Click
ing	828	865	1.04	76 Link Clicks	\$0.13 Link Click
	9,680 People	14,479 Total	1.50 Per Person	1,265 Link Clicks	\$0.09 Link Click

Facebook—24,828



Marketing Activity

2308 Ram, Eagle



Summary Results

AS OF 2-21-2019

Listhub: 13,613

Proxio: 873

YouTube: 548

MLS Direct:

Agent: 531 Client: 93

LGP: 1973

DuPont: 194

Facebook: 24828

Showcase Property 16,541

Zillow: 29,464

Trulia: 9187

Realtor.com: 18,716

Idaho Real Estate Search: 1186

Accel Idaho: 188

Accel Realty Partners: 828

Top Referring IP— *Boise, ID, Eagle ID, San Francisco, CA, Denver, CO*

View Count - 118,763